



High Output Models

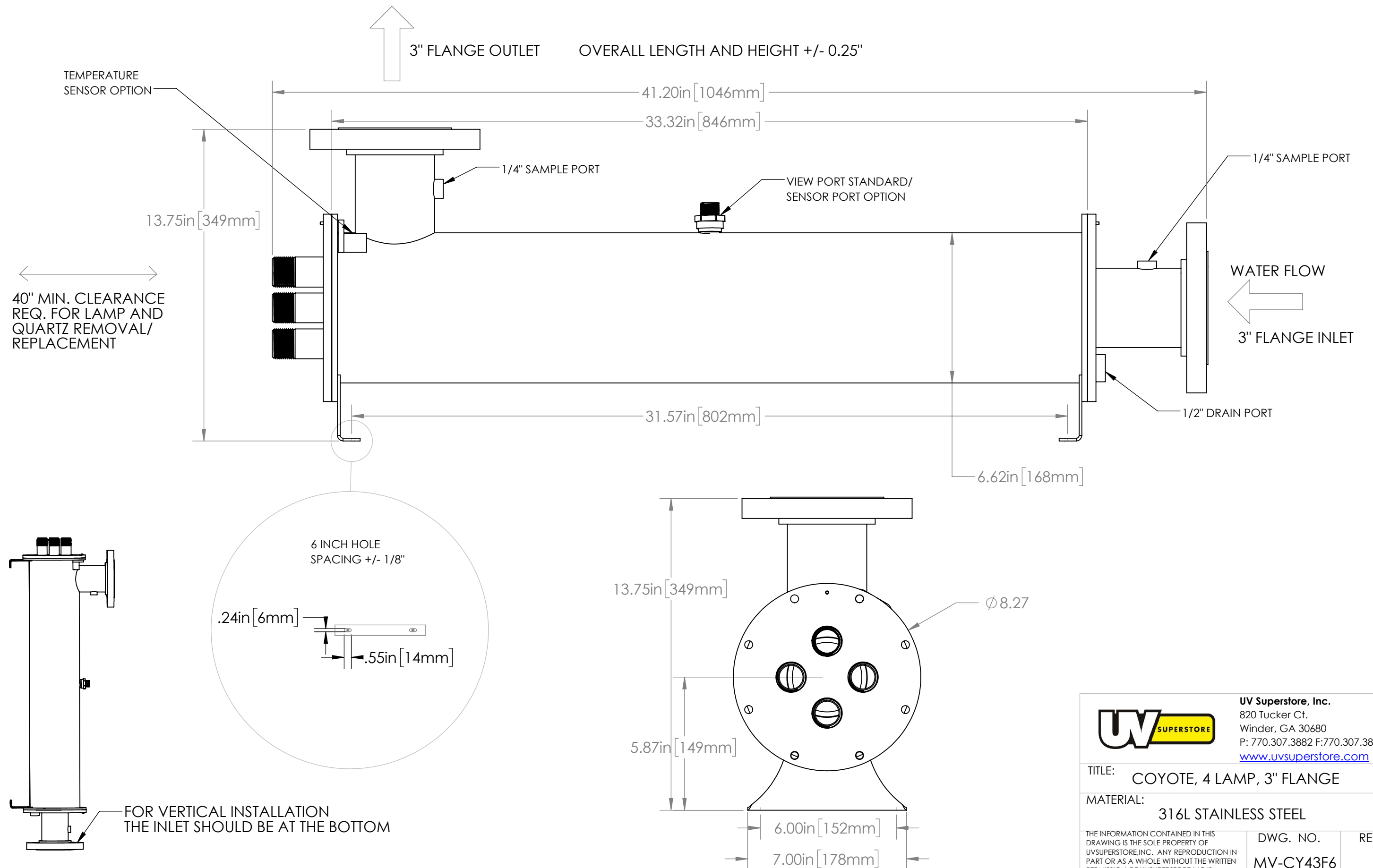
Four Lamp Systems – Short Design

Mechanical Drawings

[3" Flange](#)

[3" Sanitary](#)

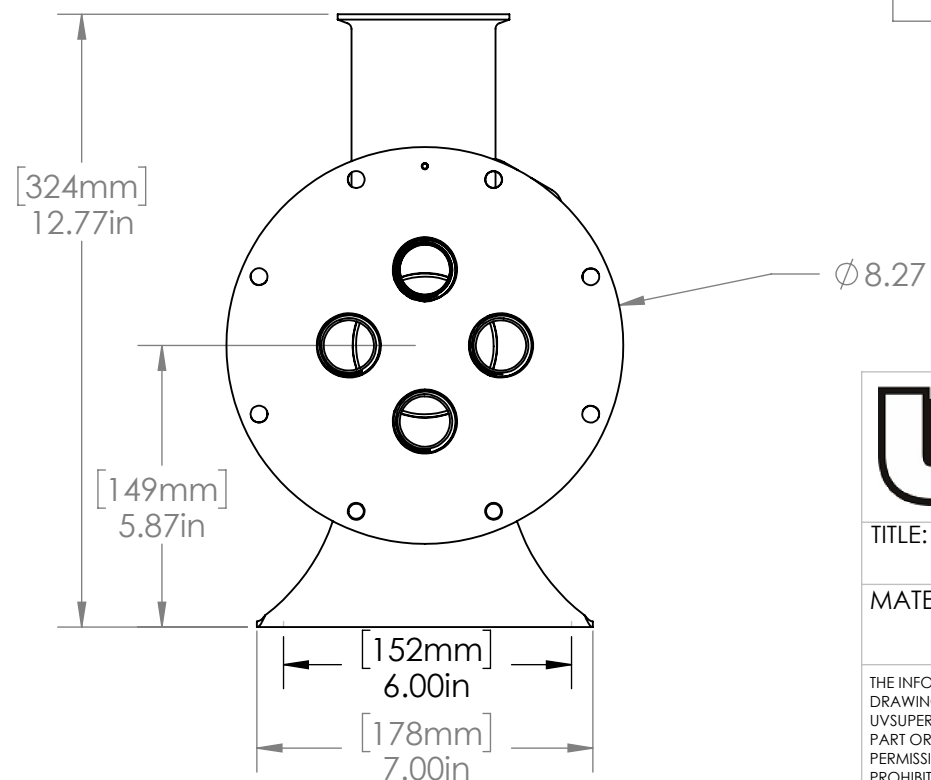
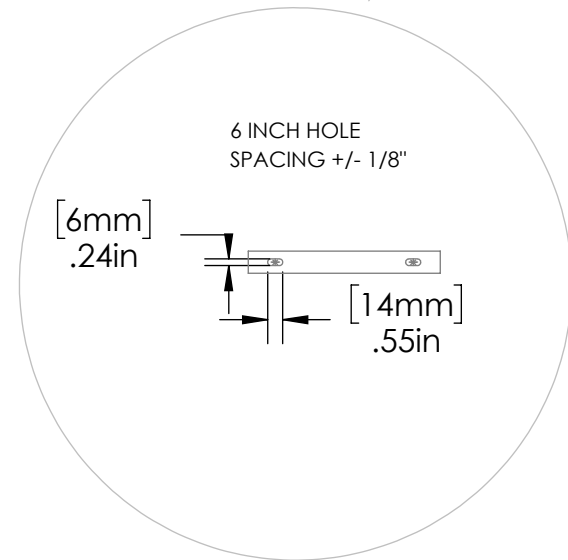
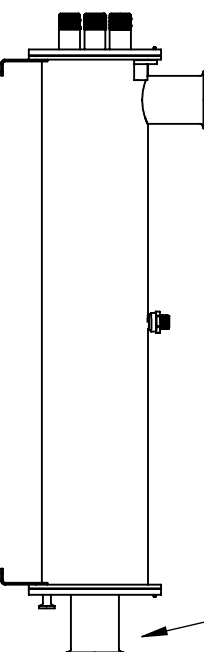
[Enclosure](#)



UV SUPERSTORE UV Superstore, Inc. 820 Tucker Ct. Winder, GA 30680 P: 770.307.3882 F: 770.307.3872 www.uvsuperstore.com		
TITLE: COYOTE, 4 LAMP, 3" FLANGE		
MATERIAL: 316L STAINLESS STEEL		
THE INFORMATION CONTAINED IN THIS DRAWING IS THE SOLE PROPERTY OF UVSUPERSTORE, INC. ANY REPRODUCTION IN PART OR AS A WHOLE WITHOUT THE WRITTEN PERMISSION OF UVSUPERSTORE, INC IS PROHIBITED.	DWG. NO. MV-CY43F6	REV
6/17/16	RWD	SHEET 1 OF 1

3" SANITARY OUTLET

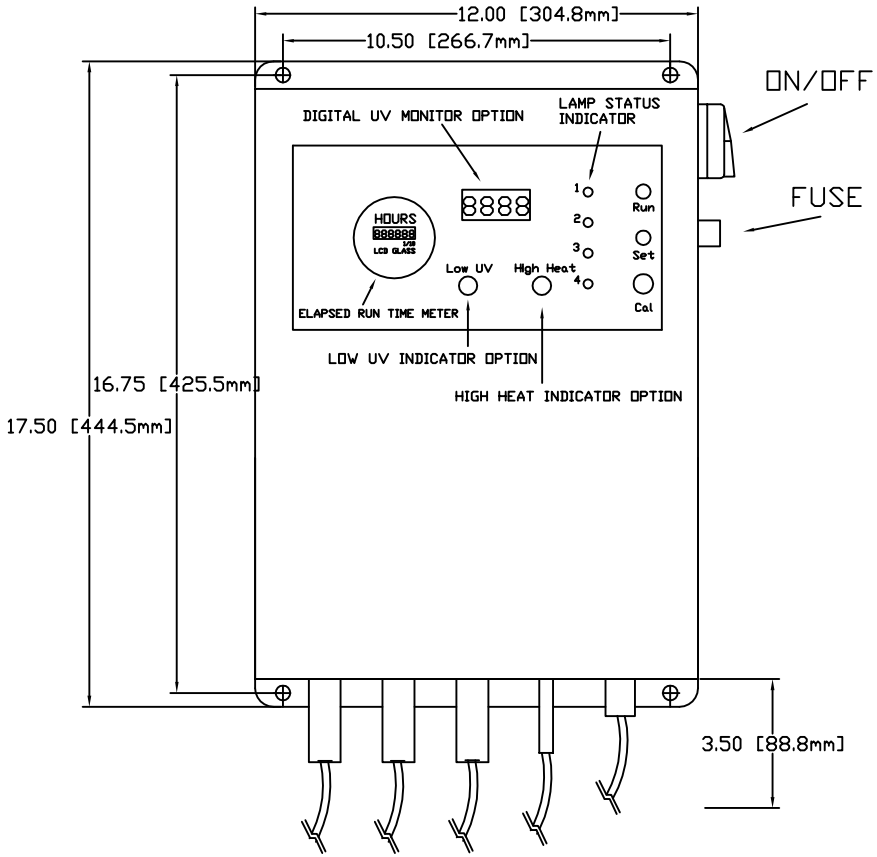
OVERALL LENGTH AND HEIGHT +/- 0.25"



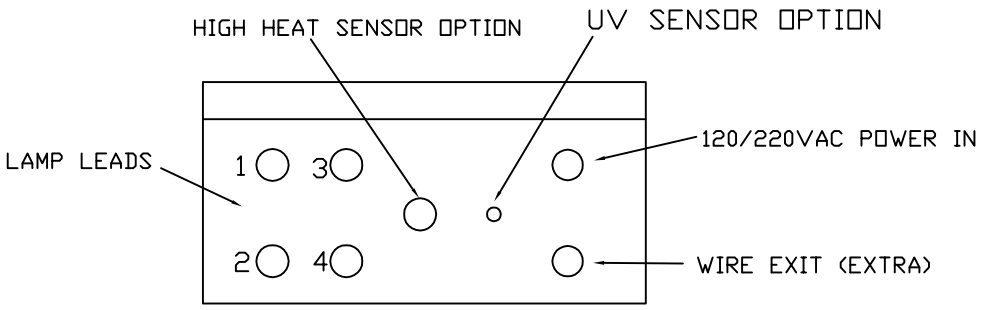
		UV Superstore, Inc. 820 Tucker Ct. Winder, GA 30680 P: 770.307.3882 F: 770.307.3872 www.uvsuperstore.com	
TITLE:		COYOTE, 4 LAMP, 3" SANITARY	
MATERIAL:		316L STAINLESS STEEL	
THE INFORMATION CONTAINED IN THIS DRAWING IS THE SOLE PROPERTY OF UVSUPERSTORE, INC. ANY REPRODUCTION IN PART OR AS A WHOLE WITHOUT THE WRITTEN PERMISSION OF UVSUPERSTORE, INC IS PROHIBITED.		DWG. NO.	REV
		MV-CY43S6	
3/10/16		BY: RWD	SHEET 1 OF 1

REVISIONS			
LOC	DESCRIPTION	DATE	APPROVAL

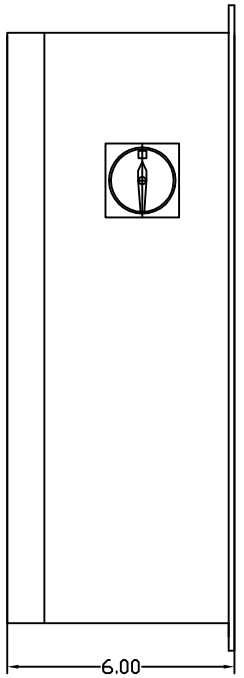
FRONT



BOTTOM



RIGHT SIDE



820 Tucker Court Vinder, GA 30680
P:770.307.3882 F:770.307.3872
www.uvsuperstore.com

304 SS OR YELLOW POWDER COAT

THIS DRAWING CONTAINS DESIGNS AND OTHER INFORMATION WHICH ARE THE PROPERTY OF UV SUPERSTORE, INC. THIS DRAWING MAY NOT, IN PART OR IN WHOLE, BE DUPLICATED OR DISCLOSED OR USED FOR MANUFACTURE OF THE PART DISCLOSED HEREIN, WITHOUT THE PRIOR WRITTEN PERMISSION OF UV SUPERSTORE, INC.

COYTE ELECTRICAL ENCLOSURE HIGH OUTPUT

BY: **D** BC DATE: **4-14-14**