



High Output Models

Two Lamp Systems – Short Design

Mechanical Drawings

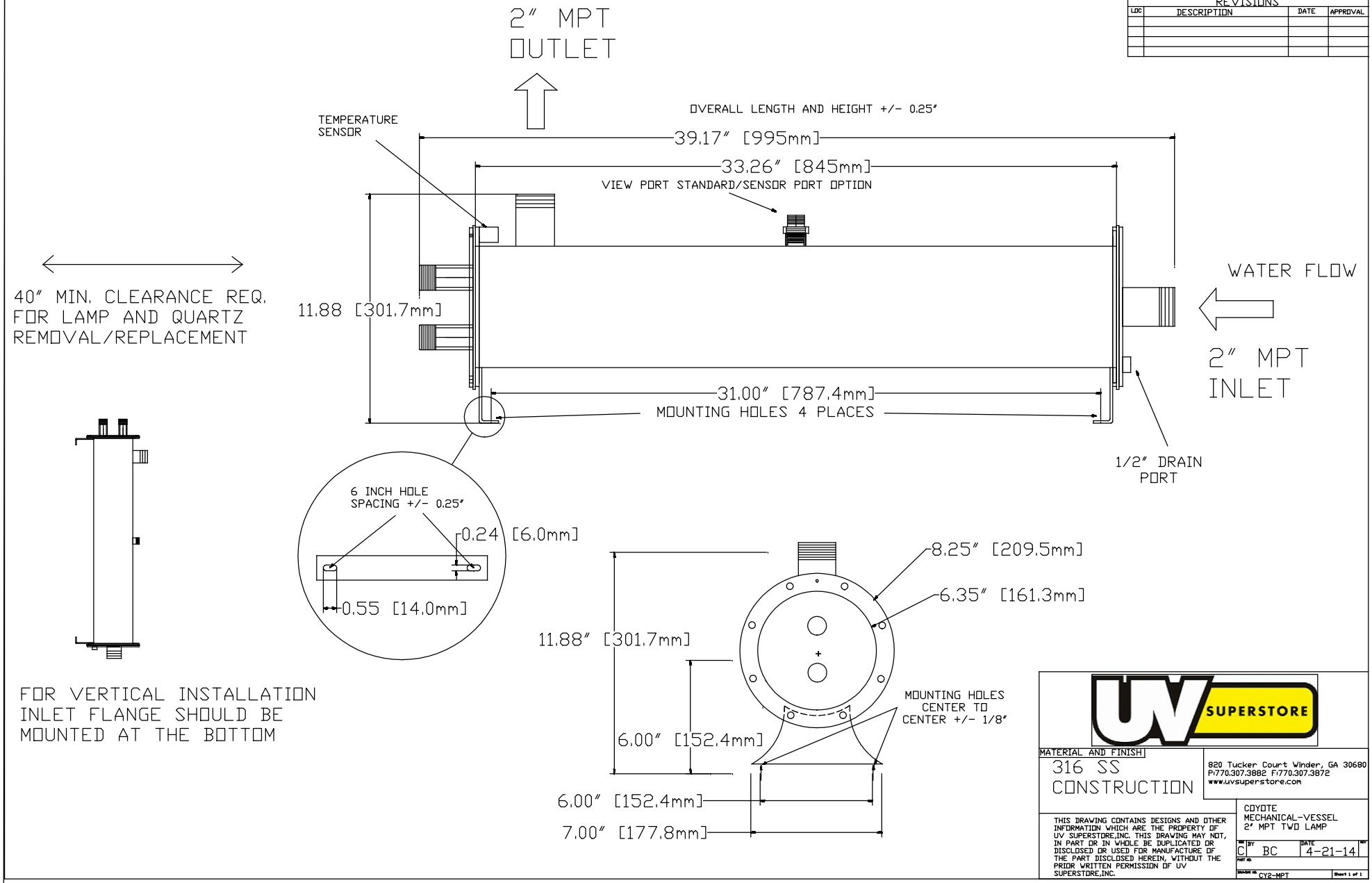
[2" NPT](#)

[2" Flange](#)

[2" Sanitary](#)

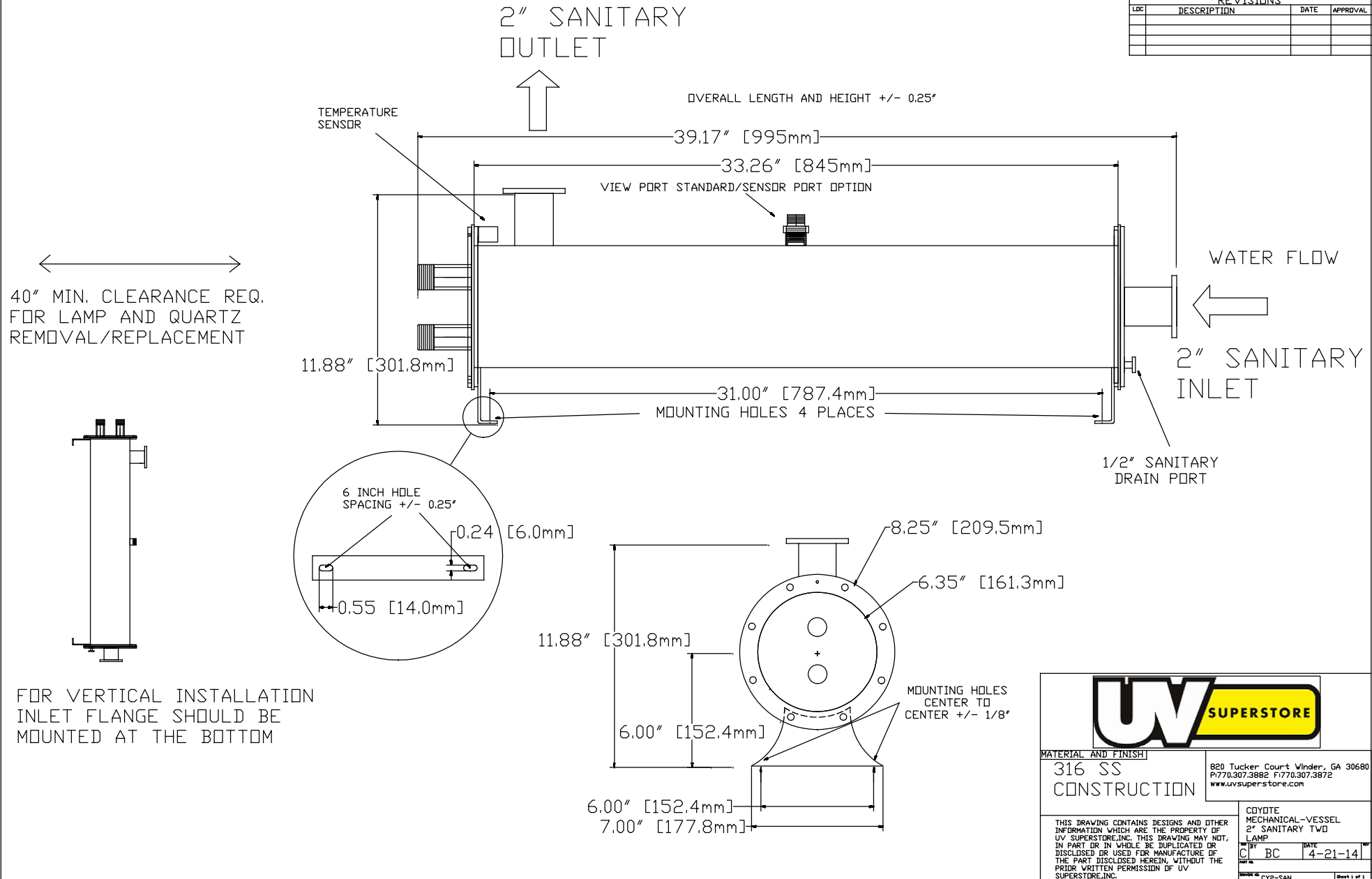
[Enclosure](#)

REVISIONS			
LDC	DESCRIPTION	DATE	APPROVAL



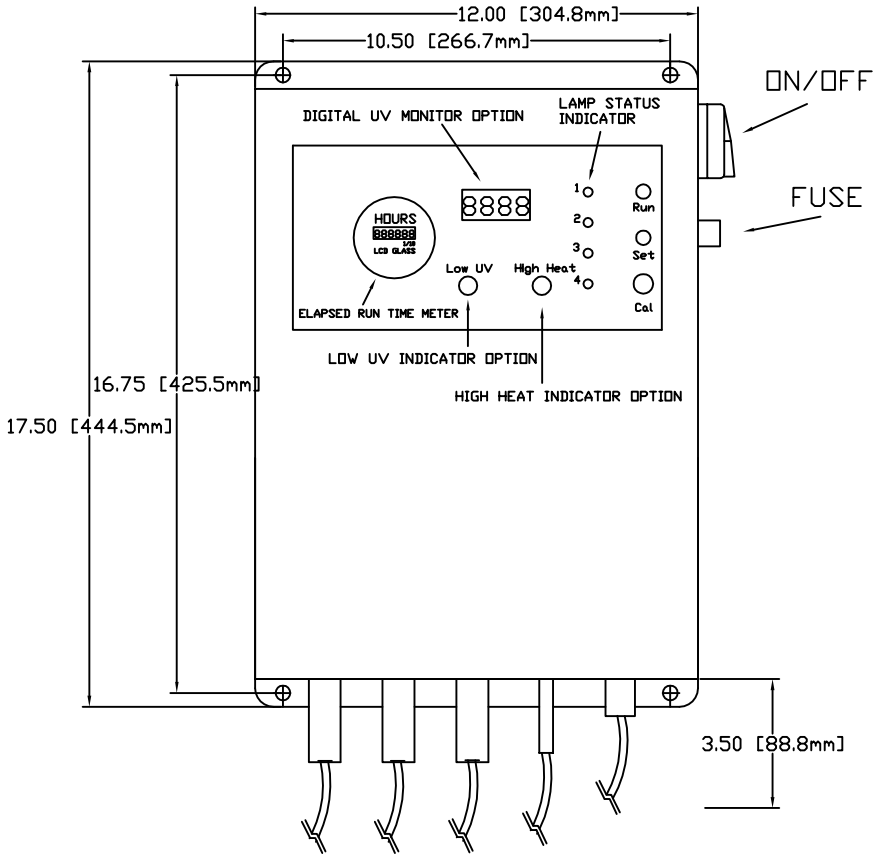


REVISIONS			
LDC	DESCRIPTION	DATE	APPROVAL

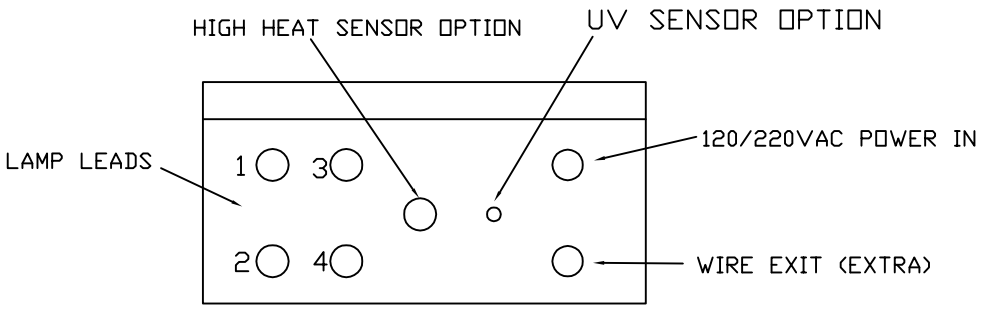


REVISIONS			
LOC	DESCRIPTION	DATE	APPROVAL

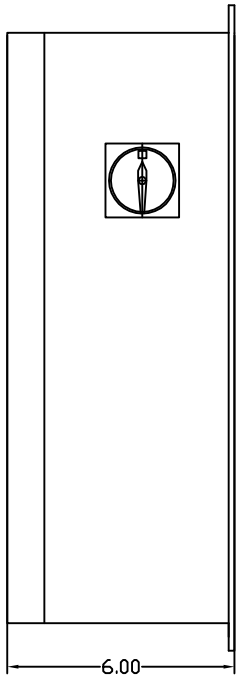
FRONT



BOTTOM



RIGHT SIDE



820 Tucker Court Vinder, GA 30680  
P:770.307.3882 F:770.307.3872  
www.uvsuperstore.com

**304 SS OR YELLOW POWDER COAT**

THIS DRAWING CONTAINS DESIGNS AND OTHER INFORMATION WHICH ARE THE PROPERTY OF UV SUPERSTORE, INC. THIS DRAWING MAY NOT, IN PART OR IN WHOLE, BE DUPLICATED OR DISCLOSED OR USED FOR MANUFACTURE OF THE PART DISCLOSED HEREIN, WITHOUT THE PRIOR WRITTEN PERMISSION OF UV SUPERSTORE, INC.

COYTE ELECTRICAL ENCLOSURE HIGH OUTPUT

BY: **D** BC DATE: **4-14-14**