



High Output Models

One Lamp Systems – Short Design

Mechanical Drawings

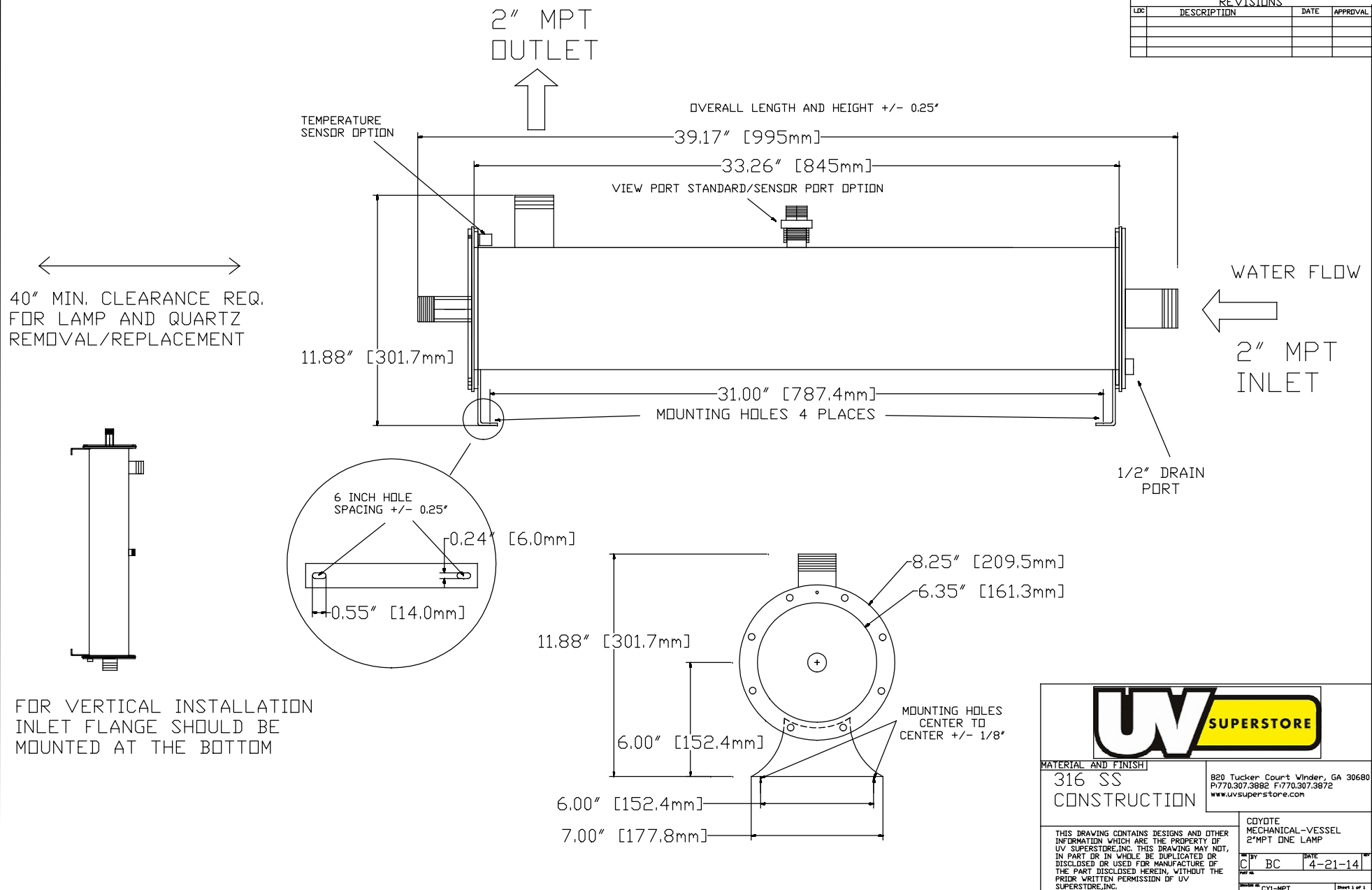
2" NPT

2" Flange

2" Sanitary

Enclosure

REVISIONS			
LDC	DESCRIPTION	DATE	APPROVAL



REVISIONS			
LDC	DESCRIPTION	DATE	APPROVAL

40" MIN. CLEARANCE REQ.
FOR LAMP AND QUARTZ
REMOVAL/REPLACEMENT

TEMPERATURE
SENSOR OPTION

2" FLANGE
OUTLET

OVERALL LENGTH AND HEIGHT +/- 0.25"

40.50" [1028.7mm]

33.26" [844.8mm]

VIEW PORT STANDARD/SENSOR PORT OPTION

1/4" SAMPLE
PORT

1/4" SAMPLE PORT

WATER FLOW

2" FLANGE
INLET

31.00" [787.4mm]

MOUNTING HOLES 4 PLACES

1/2" DRAIN
PORT

6 INCH HOLE
SPACING +/- 0.25"

0.24" [6.0mm]

0.55" [14.0mm]

8.25" [209.5mm]

6.35" [161.2mm]

13.18" [334.7mm]

6.00" [152.4mm]

MOUNTING HOLES
CENTER TO
CENTER +/- 1/8"

6.00" [152.4mm]

7.00" [177.8mm]

FOR VERTICAL INSTALLATION
INLET FLANGE SHOULD BE
MOUNTED AT THE BOTTOM



MATERIAL AND FINISH

316 SS
CONSTRUCTION

820 Tucker Court Winder, GA 30680
P:770.307.3882 F:770.307.3872
www.uvsuperstore.com

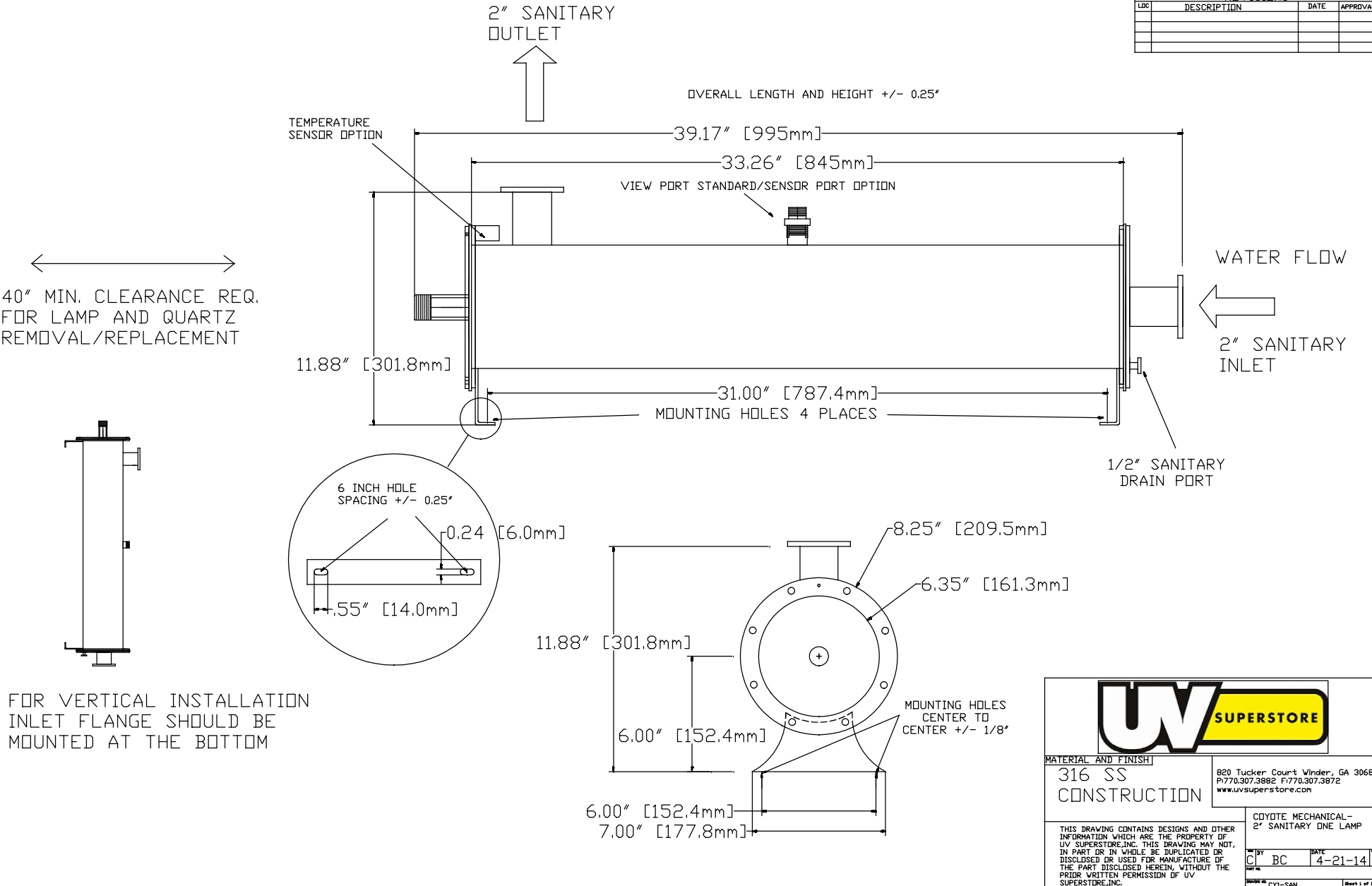
CDYTE
MECHANICAL-VESSEL
2"FLANGE ONE LAMP

THIS DRAWING CONTAINS DESIGNS AND OTHER
INFORMATION WHICH ARE THE PROPERTY OF
UV SUPERSTORE,INC. THIS DRAWING MAY NOT,
IN PART OR IN WHOLE BE DUPLICATED OR
DISCLOSED OR USED FOR MANUFACTURE OF
THE PART DISCLOSED HEREIN, WITHOUT THE
PRIOR WRITTEN PERMISSION OF UV
SUPERSTORE,INC.

REV BY DATE
C BC 4-21-14

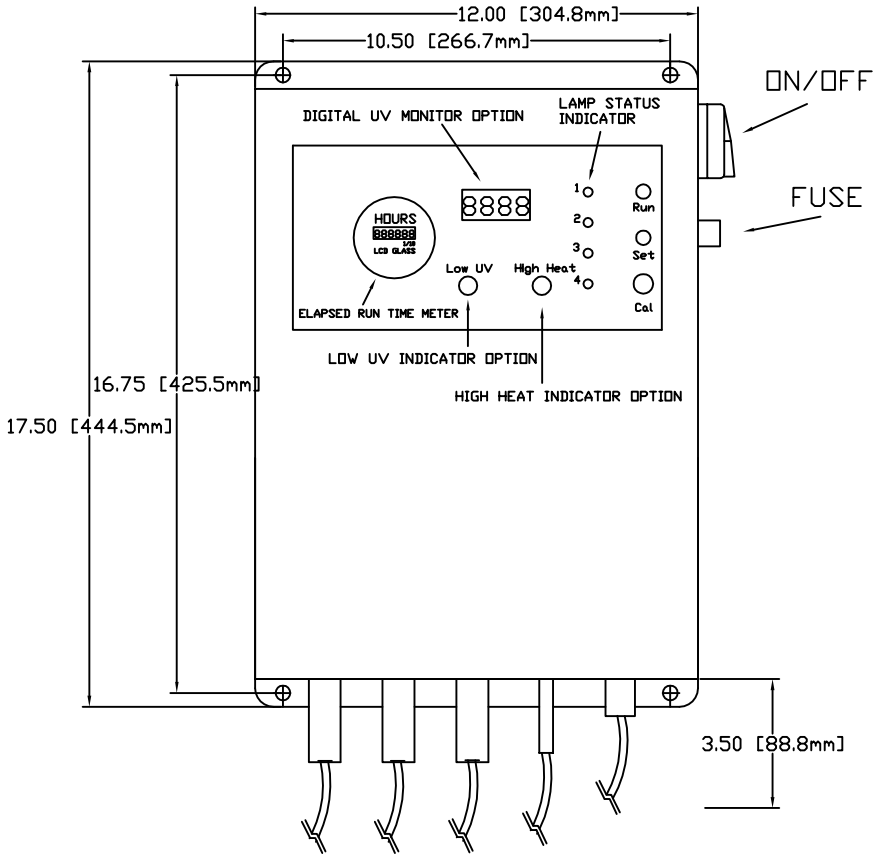
DRAWING NO. CY1-FLANGE SHEET 1 OF 1

REVISONS			
LDC	DESCRIPTION	DATE	APPROVAL

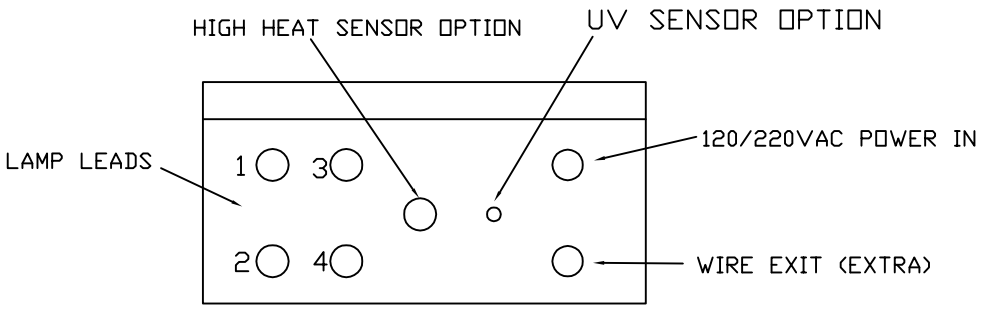


REVISIONS			
LOC	DESCRIPTION	DATE	APPROVAL

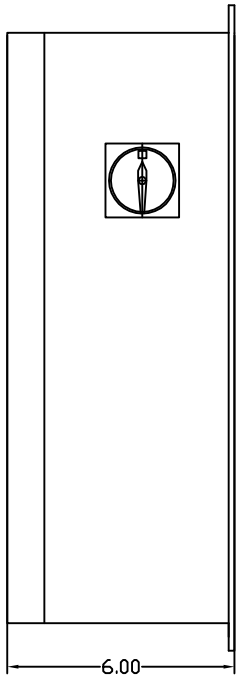
FRONT



BOTTOM



RIGHT SIDE



820 Tucker Court Vinder, GA 30680
P:770.307.3882 F:770.307.3872
www.uvsuperstore.com

304 SS OR YELLOW POWDER COAT

THIS DRAWING CONTAINS DESIGNS AND OTHER INFORMATION WHICH ARE THE PROPERTY OF UV SUPERSTORE, INC. THIS DRAWING MAY NOT, IN PART OR IN WHOLE, BE DUPLICATED OR DISCLOSED OR USED FOR MANUFACTURE OF THE PART DISCLOSED HEREIN, WITHOUT THE PRIOR WRITTEN PERMISSION OF UV SUPERSTORE, INC.

COYTE ELECTRICAL ENCLOSURE HIGH OUTPUT

BY: **D** BC DATE: **4-14-14**